

**WOMENS
FALL 2024**
ESSENTIALS
FEAR OF GOD

FABRIC = **TRI-BLEND** (53/40/7 CTTN/POLY/RAYON, 200 GSM)



Style # : 125BT245440FW
Name: TRI-BLEND CREWNECK TEE
Artwork: WATER BASE SCREEN PRINT



Style # : 125BT245490FW
Name: TRI-BLEND TANK TOP
Artwork: PU LABEL

FABRIC = **TRI-BLEND** (53/40/7 CTTN/POLY/RAYON, 200 GSM)



Style # : **125BT245501FW**
Name: TRI-BLEND 3/4 SLEEVE DRESS
Artwork: WATER BASE SCREEN PRINT



Style # : **125BT245670FW**
Name: TRI-BLEND CROPPED LONGSLEEVE SHIRT
Artwork: WATER BASE SCREEN PRINT

FABRIC = **TRI-BLEND** (53/40/7 CTTN/POLY/RAYON, 200 GSM)



125BT245630FW
BLACK



125BT245633FW
AMBER



Style # : 125BT245630FW
Name: TRI-BLEND BASEBALL SHIRT
Artwork: WATER BASE SCREEN PRINT

125BT245613FW
AMBER



125BT245615FW
MILITARY



125BT245611FW
DARK HEATHER

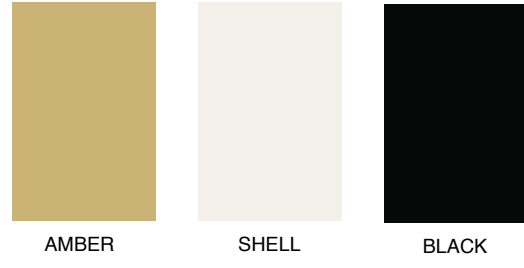


125BT245610FW
BLACK



Style # : 125BT245610FW
Name: TRI-BLEND CROPPED MUSCLE TEE
Artwork: WATER BASE SCREEN PRINT

FABRIC = **PIQUE** (64/36 CTTN/POLY, 230 GSM)

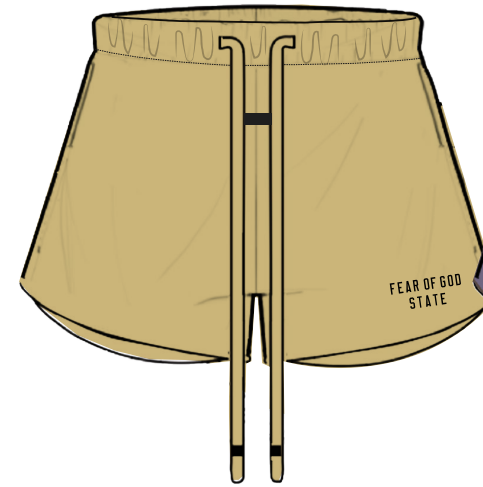


Style # : **125BT245680FW**
Name: PIQUE CROPPED POLO
Artwork: PU LABEL

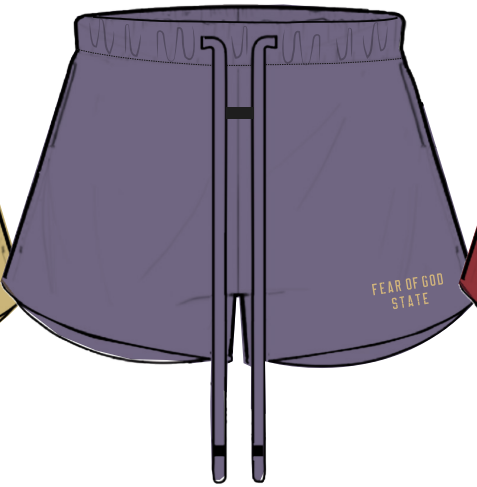
FABRIC = **HEAVY JERSEY** (100% COTTON, 380 GSM)



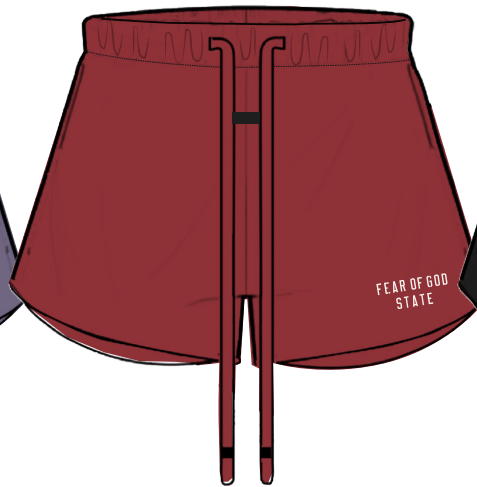
160BT245583FW
AMBER



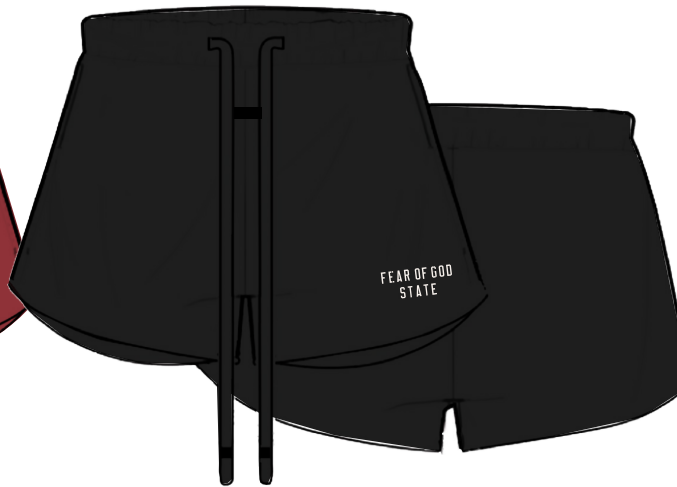
160BT245587FW
LAVENDER



160BT245586FW
CRIMSON



160BT245580FW
BLACK



Style # : **160BT245580FW**
Name: HEAVY JERSEY RUNNING SHORTS
Artwork: WATER BASE SCREEN PRINT

FABRIC = CORE FLEECE (80/20 CTTN/POLY **480GSM**)



192BT247353FW
AMBER



192BT247351FW
DARK HEATHER



192BT247350FW
BLACK



Style # : **192BT247350FW**
Name: FLEECE CROPPED HOODIE
Artwork: WATER BASE SCREEN PRINT

192BT247383FW
AMBER



192BT247381FW
DARK HEATHER

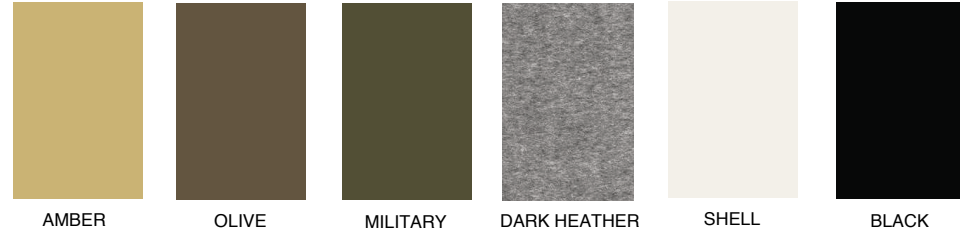


192BT247380FW
BLACK



Style # : **192BT247380FW**
Name: FLEECE CROPPED CREWNECK
Artwork: WATER BASE SCREEN PRINT

FABRIC = CORE FLEECE (80/20 CTTN/POLY 480GSM)



192BT245573FW
AMBER

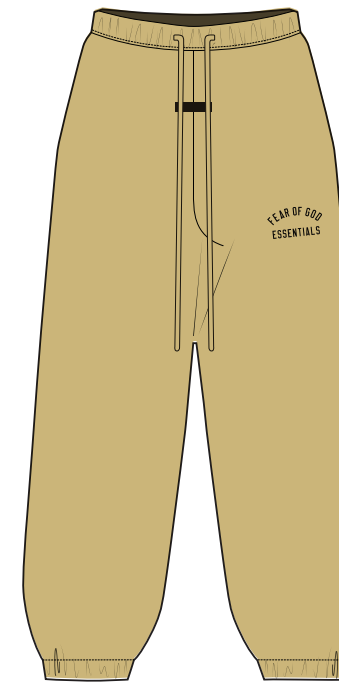


192BT245570FW
BLACK



Style # : 192BT245570FW
Name: FLEECE CREWNECK DRESS
Artwork: WATER BASE SCREEN PRINT

130BT245163FW
AMBER



130BT245164FW
OLIVE



130BT245165FW
MILITARY



130BT245161FW
DARK HEATHER

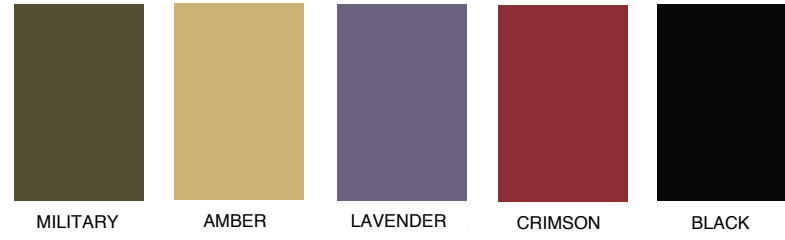


130BT245160FW
BLACK



Style # : 130BT245160FW
Name: FLEECE SWEATPANT
Artwork: WATER BASE SCREEN PRINT

FABRIC = COTTON FLEECE (100% COTTON, 520 GSM)



192BT245595FW
MILITARY



192BT245593FW
AMBER



192BT245597FW
LAVENDER



192BT245596FW
CRIMSON



192BT245590FW
BLACK



Style # : 192BT245590FW
Name: HEAVY FLEECE CROPPED V-NECK HOODIE
Artwork: WATER BASE SCREEN PRINT

192BT245623FW
AMBER



192BT245627FW
LAVENDER



192BT245626FW
CRIMSON

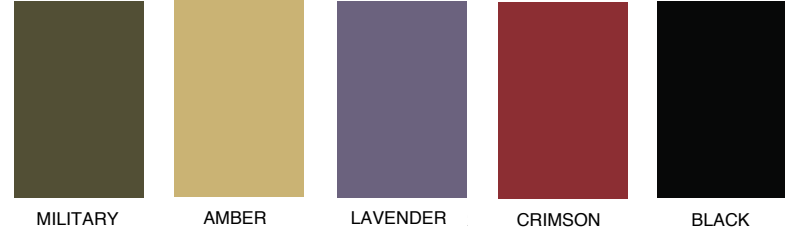


192BT245620FW
BLACK



Style # : 192BT245620FW
Name: HEAVY FLEECE CROPPED CREWNECK
Artwork: WATER BASE SCREEN PRINT

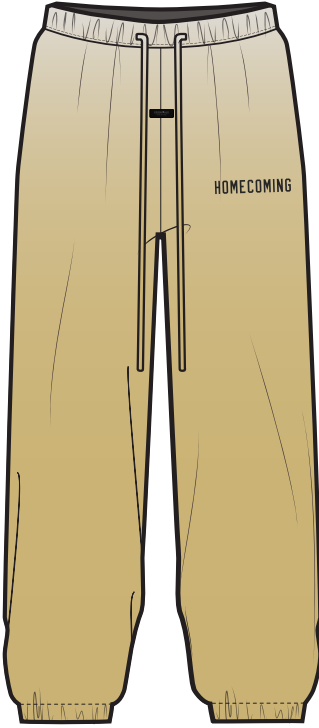
FABRIC = **COTTON FLEECE** (100% COTTON, 520 GSM)



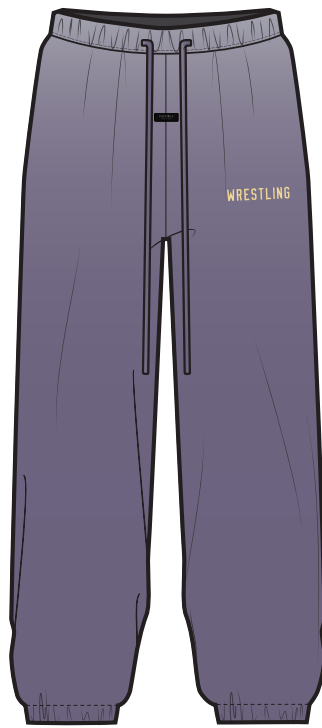
130BT245185FW
MILITARY



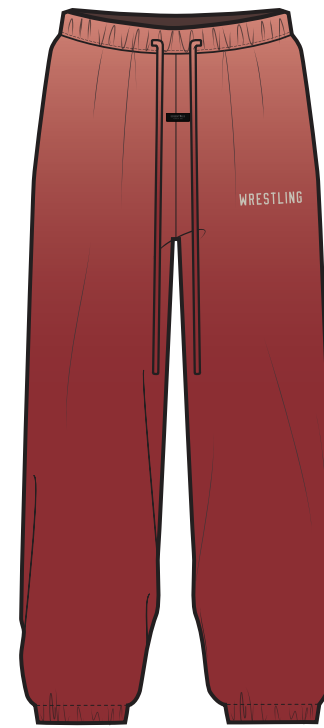
130BT245183FW
AMBER



130BT245187FW
LAVENDER



130BT245186FW
CRIMSON

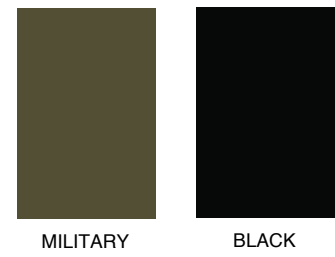


130BT245180FW
BLACK



Style # : **130BT245180FW**
Name: HEAVY FLEECE SWEATPANT
Artwork: WATER BASE SCREEN PRINT

FABRIC = **RIPSTOP NYLON** (100% NYLON, 81 GSM) - (LINED WITH PERFORATED LINING 100% Poly, 60gsm)



MILITARY BLACK

202BT245370FW 202BT245375FW
BLACK MILITARY



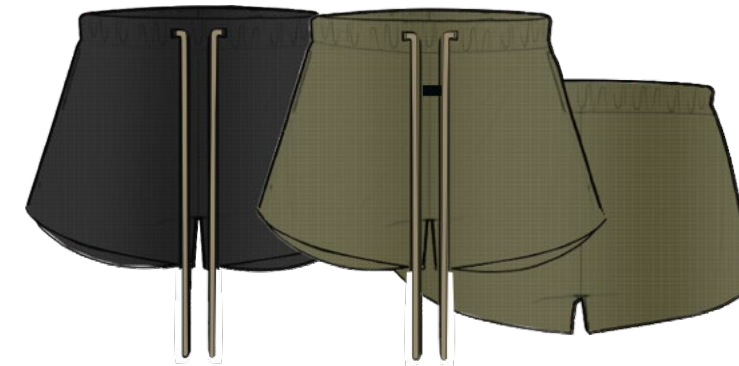
Style # : **202BT245370FW**
Name: RIPSTOP TRACK JACKET

130BT245300FW 130BT245305FW
BLACK MILITARY



Style # : **130BT245300FW**
Name: RIPSTOP TRACKPANT

130BT245380FW 130BT245385FW
BLACK MILITARY



Style # : **130BT245380FW**
Name: RIPSTOP RUNNING SHORT

202BT245380FW 202BT245385FW
BLACK MILITARY



Style # : **202BT245380FW**
Name: RIPSTOP LONG HOODED ANORAK

FABRIC = **MILITARY NYLON** (38% ECOVERO VERO VISCOSE / 38% INRESST RECYCLED NYLON / 24% NYLON, 215 GSM) - (LINED WITH PERFORATED LINING 100% Poly, 60gsm)



Style # : **202BT245280FW**
Name: NYLON CROPPED HOODED ANORAK



Style # : **202BT245290FW (FILLED)**
Name: MILITARY NYLON BOMBER JACKET

FABRIC = **MILITARY NYLON** (38% ECOVERO VERO VISCOSE / 38% INRESST RECYCLED NYLON / 24% NYLON, 215 GSM) - (LINED WITH PERFORATED LINING 100% Poly, 60gsm)

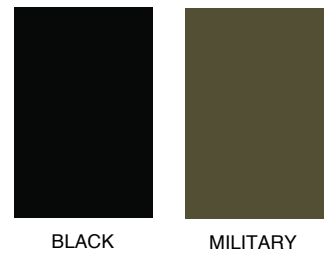


Style # : **130BT245280FW**
Name: MILITARY NYLON FIELD PANT



Style # : **160BT245590FW**
Name: MILITARY NYLON WRAP SKIRT

FABRIC = **BONDED NYLON** (GROUND: 100% POLYESTER, FACE: 90% NYLON / 10% SPANDEX, 330 GSM) - (LINED WITH PERFORATED LINING 100% Poly, 60gsm)



Style # : **202BT245270FW**
Name: BONDED NYLON HOODED ANORAK

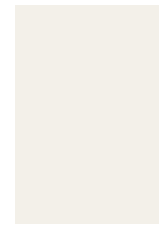


Style # : **130BT245260FW**
Name: BONDED NYLON FIELD PANT



Style # : **160BT245540FW**
Name: BONDED NYLON WRAP SKIRT

FABRIC = **TPU** (100% POLYESTER) - MATTE SIDE UP



SHELL



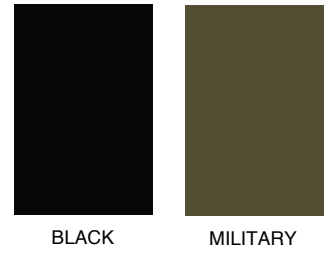
BLACK

160BT245412FW 160BT245410FW
SHELL BLACK



Style # : 160BT245410FW
Name: TRANSPARENT SKIRT

FABRIC = **TEXTURED NYLON** (100% RECYCLED NYLON W/ JERSEY BACKING - (LINED WITH PERFORATED LINING 100% Poly, 60gsm)



186BT245360FW
BLACK

186BT245365FW
MILITARY

Style # : **186BT245360FW**
Name: TEXTURED NYLON CREWNECK PULLOVER

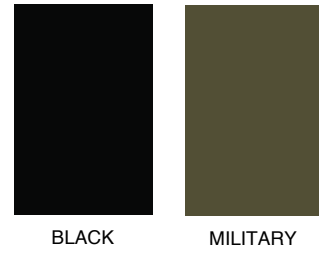


202BT245350FW
BLACK

202BT245355FW
MILITARY

Style # : **202BT245350FW**
Name: TEXTURED NYLON HOODED BOMBER

FABRIC = **TEXTURED NYLON** (100% RECYCLED NYLON W/ JERSEY BACKING - (LINED WITH PERFORATED LINING 100% Poly, 60gsm)

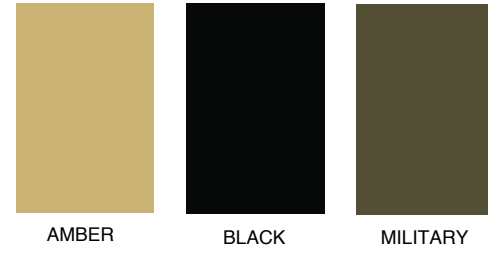


Style # : **202BT245360FW**
Name: TEXTURED NYLON TRACK JACKET
Artwork: SATIN APPLIQUÉ



Style # : **130BT245360FW**
Name: TEXTURED NYLON FIELD PANTS

FABRIC = **SATIN NYLON** (95/5 POLY/SPAN, 445 GSM) - (LINED WITH PERFORATED LINING 100% Poly, 60gsm)

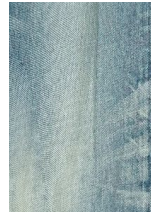


Style # : **202BT245390FW** (UNFILLED)
Name: SATIN NYLON BOMBER JACKET



Style # : **130BT245220FW**
Name: SATIN NYLON PANT

FABRIC = NEW VINTAGE BLUE DENIM (100% COTTON)



VINTAGE BLUE

130BT245310FW
VINTAGE BLUE



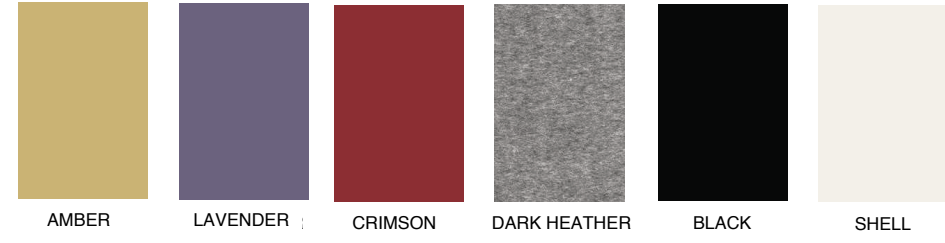
Style # : **130BT245310FW**
Name: STRAIGHT LEG DENIM JEAN

130BT245320FW
VINTAGE BLUE



Style # : **130BT245320FW**
Name: HIGH WAISTED FITTED JEAN

FABRIC = WAFFLE (KNIT: 88/12 POLY/NYLON)

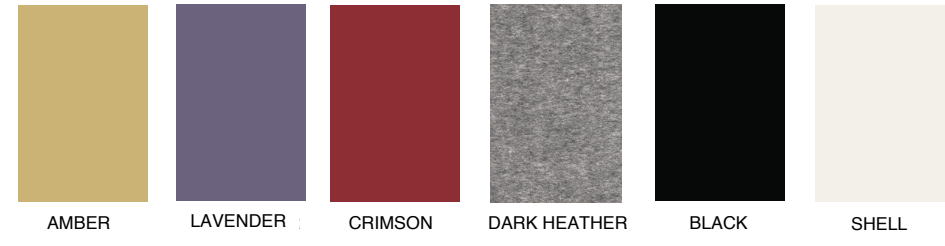


Style # : 192BT247220FW
Name: WAFFLE SPORT TANK



Style # : 192BT247230FW
Name: WAFFLE TANK

FABRIC = WAFFLE (KNIT: 88/12 POLY/NYLON)

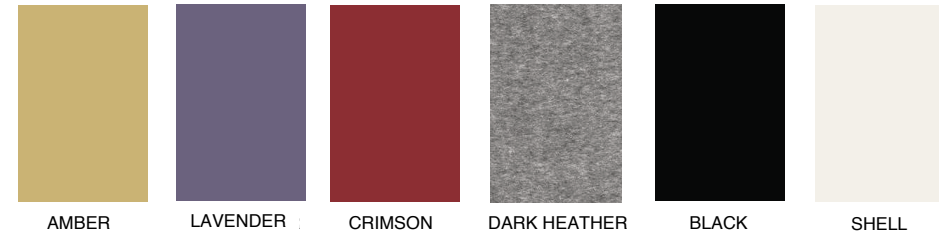


Style # : **192BT247240FW**
Name: WAFFLE FITTED LONG SLEEVE SWEATER



Style # : **192BT247250FW**
Name: WAFFLE BOY SHORT

FABRIC = WAFFLE (KNIT: 88/12 POLY/NYLON)



Style # : 192BT247260FW
Name: WAFFLE BIKER SHORT

192BT247273FW 192BT247277FW 192BT247276FW 192BT247271FW 192BT247270FW 192BT247272FW
AMBER LAVENDER CRIMSON DARK HEATHER BLACK SHELL



Style # : 192BT247270FW
Name: WAFFLE LEGGING

FABRIC = WAFFLE (KNIT: 88/12 POLY/NYLON)



192BT247295FW MILITARY
 192BT247290FW BLACK
 192BT247296FW CRIMSON
 192BT247291FW DARK HEATHER
 192BT247292FW SHELL



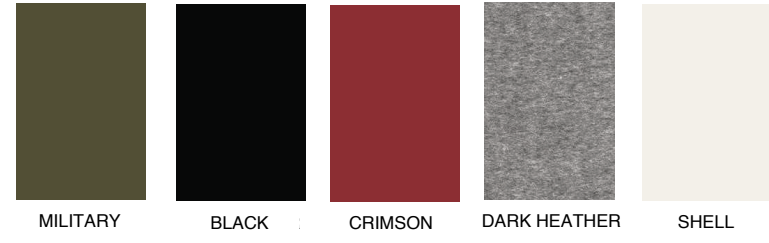
Style # : 192BT247290FW
 Name: WAFFLE TURTLENECK

192BT247305FW MILITARY
 192BT247300FW BLACK
 192BT247306FW CRIMSON
 192BT247301FW DARK HEATHER
 192BT247302FW SHELL



Style # : 192BT247300FW
 Name: WAFFLE TURTLENECK DRESS

FABRIC = WAFFLE (KNIT: 88/12 POLY/NYLON)



192BT247315FW MILITARY 192BT247310FW BLACK 192BT247316FW CRIMSON 192BT247311FW DARK HEATHER 192BT247312FW SHELL



Style # : 192BT247310FW
Name: WAFFLE RELAXED PANT

192BT247285FW MILITARY 192BT247280FW BLACK 192BT247286FW CRIMSON 192BT247281FW DARK HEATHER 192BT247282FW SHELL



Style # : 192BT247280FW
Name: WAFFLE FITTED SWEATPANT

FABRIC = HEAVY WAFFLE (70/20/10 POLY/ACRYLIC/NYLON, 5 GG)



Style # : 192BT247320FW
Name: HEAVY WAFFLE CROPPED TURTLENECK



Style # : 192BT247330FW
Name: HEAVY WAFFLE CROPPED CREWNECK

FABRIC = **HEAVY WAFFLE** 70/20/10 POLY/ACRYLIC/NYLON, 5 GG)



192BT247345FW
MILITARY

192BT247341FW
DARK HEATHER

192BT247340FW
BLACK



Style # : **192BT247340FW**
Name: KNIT LONG CARDIGAN